

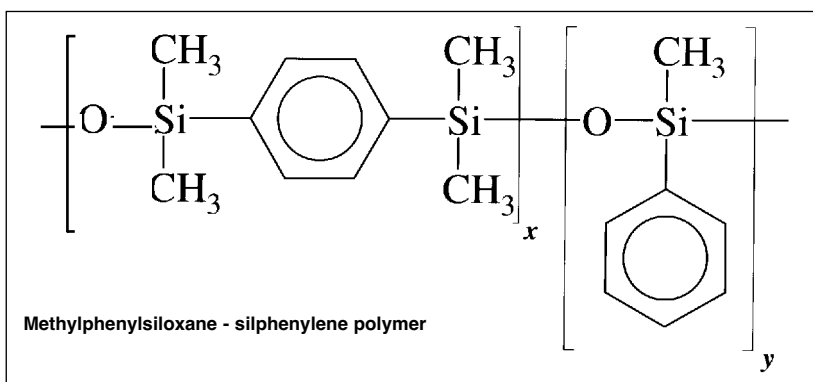
## A New Direction in Medium Polarity Stationary Phases

### INTRODUCTION

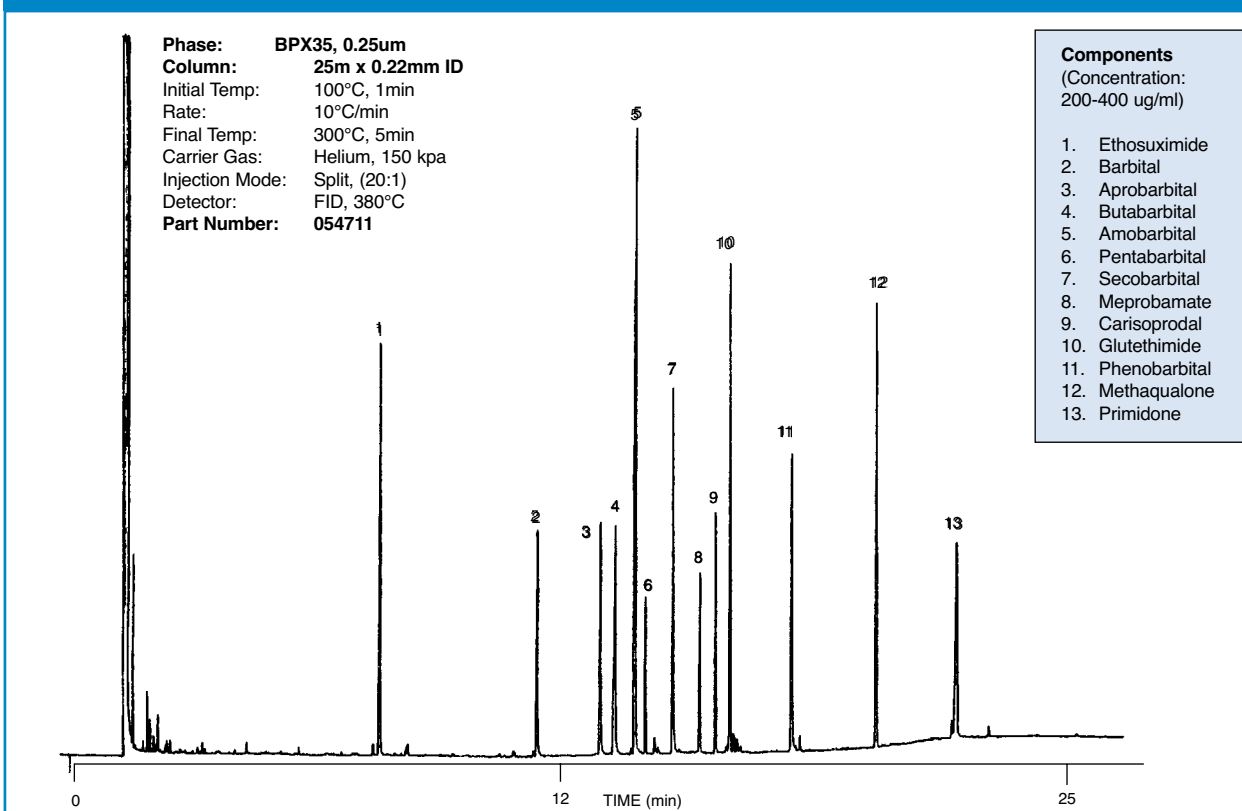
- Suitable for a wide range of applications (pharmaceuticals to herbicides)
- Mid Polarity
- Modified silphenylene siloxane backbone for high thermal stability
- Polarity equivalent to 35% Phenyl polysiloxane
- Low column bleed
- Compatible with all commonly used detector systems
- Close equivalent to USP Phase G42

BPX35 is a medium polarity phase which has the equivalent polarity to 35% phenylsiloxane but the thermal stability of a column more commonly used for high temperature petroleum distillations. Improved thermal stability (max. temp. 370°C) and excellent chemical stability ensure a wide range of applications are possible. With a polarity similar to the liquid phas-

es OV-1701 and OV-11, this phase is well suited for analysing pesticides, herbicides and other environmental sensitive compounds. The high degree of chemical inertness of the BPX35 phase also allows the analysis of a wide range of both acidic and basic compounds common to medical/forensic areas.



### ACID/NEUTRAL DRUGS



The need for a medium polarity capillary column suitable for pharmaceutical analysis is long overdue. With improved thermal stability and chemi-

cal inertness the BPX35 makes light work of analysing a variety of both acidic and basic drugs. Low column bleed and extended thermal range of

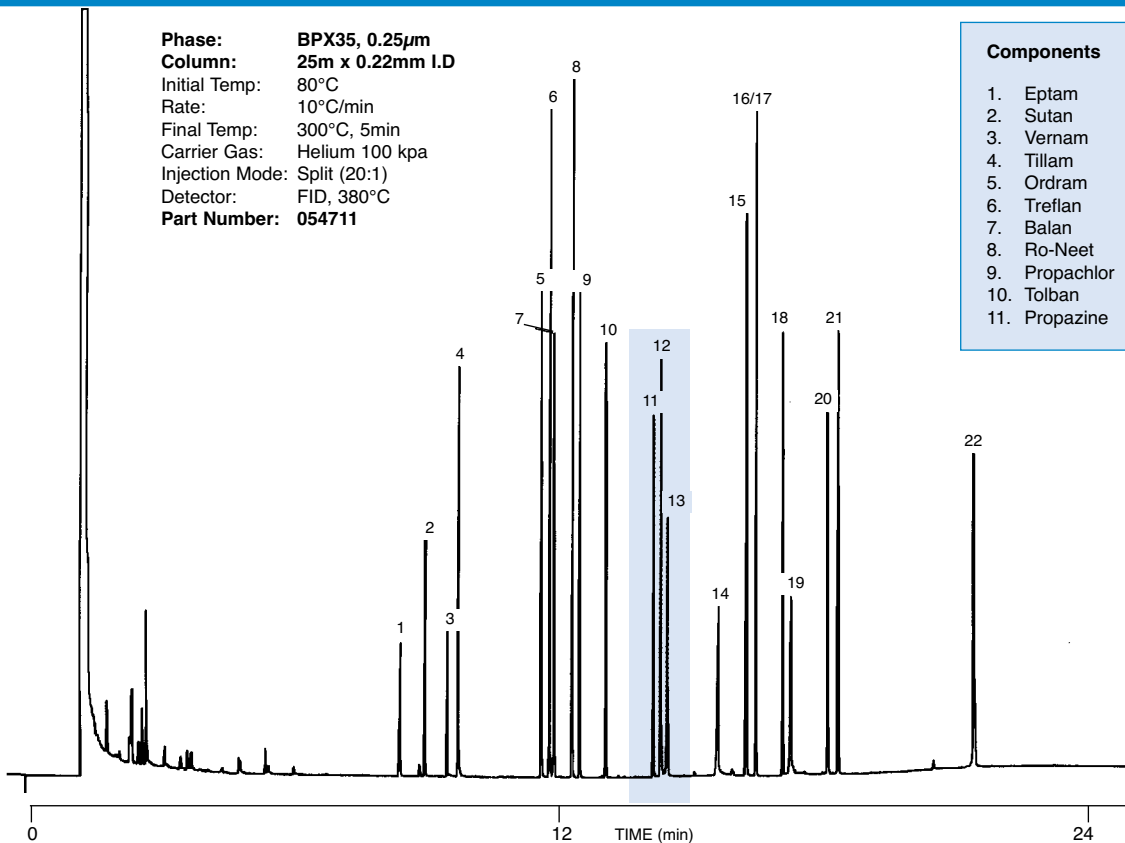
the BPX35 ensures that even trace amounts of a drug can be detected and quantified eluting at either 50°C or 360°C.

## HERBICIDES

Phase: BPX35, 0.25µm  
 Column: 25m x 0.22mm I.D  
 Initial Temp: 80°C  
 Rate: 10°C/min  
 Final Temp: 300°C, 5min  
 Carrier Gas: Helium 100 kpa  
 Injection Mode: Split (20:1)  
 Detector: FID, 380°C  
 Part Number: 054711

### Components

- |               |                |
|---------------|----------------|
| 1. Eptam      | 12. Atrazine   |
| 2. Sutan      | 13. Simazine   |
| 3. Vernam     | 14. Terbacil   |
| 4. Tillam     | 15. Sencor     |
| 5. Ordram     | 16. Dual       |
| 6. Treflan    | 17. Paarlan    |
| 7. Balan      | 18. Prowl      |
| 8. Ro-Neet    | 19. Bromacil   |
| 9. Propachlor | 20. Oxadiazon  |
| 10. Tolban    | 21. GOAL       |
| 11. Propazine | 22. Hexazinone |

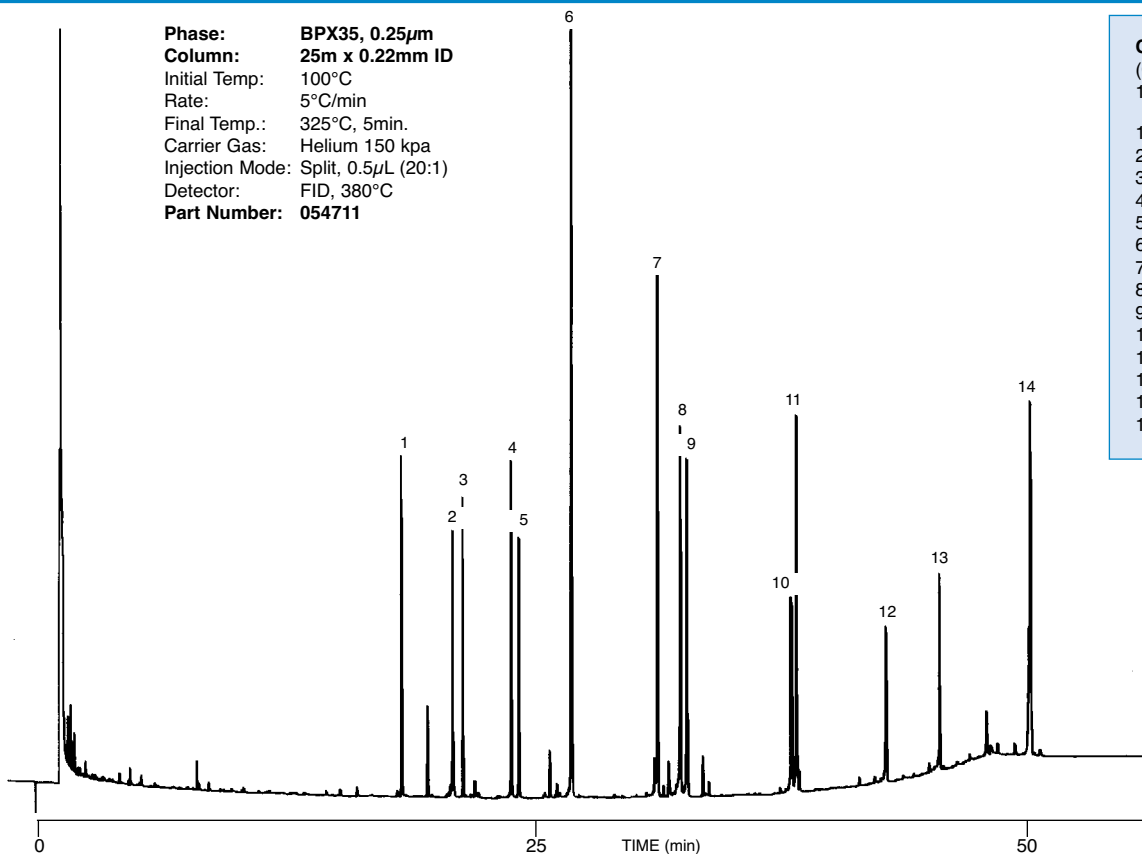


## BASIC DRUGS

Phase: BPX35, 0.25µm  
 Column: 25m x 0.22mm ID  
 Initial Temp: 100°C  
 Rate: 5°C/min  
 Final Temp.: 325°C, 5min.  
 Carrier Gas: Helium 150 kpa  
 Injection Mode: Split, 0.5µL (20:1)  
 Detector: FID, 380°C  
 Part Number: 054711

### Components (Concentration: 100-200 ug/ml)

1. Benzocaine
2. Unknown
3. Meperidine
4. Diphenhydramine
5. Lidocaine
6. Tripeleppamine
7. Amitriptyline
8. Tetracaine
9. Pyrilamine
10. Unknown
11. Diazepam
12. Flurazepam
13. Papverine
14. Triazolam



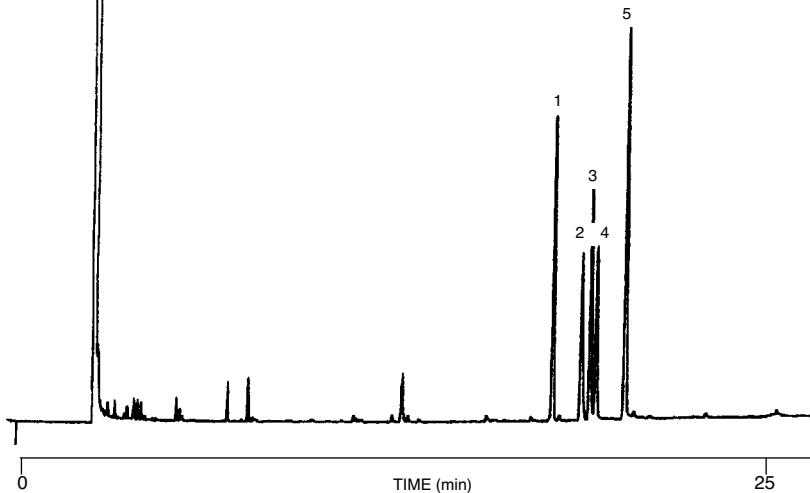
# BPX35

## TRICYCLIC ANTIDEPRESSANTS

**Phase:** BPX35, 0.25µm  
**Column:** 25m x 0.22mm ID  
**Initial Temp:** 210°C, 1min  
**Rate:** 5°C/min  
**Final Temp:** 280°C  
**Carrier Gas:** Helium, 150 kpa  
**Injection Mode:** Split (20:1)  
**Detector:** FID, 380°C

### Components

1. Amitriptyline
2. mipramine
3. Nortriptyline
4. Doxepin
5. Desipramine



## RECOMMENDED APPLICATIONS FOR BPX35

- Confirmation column
- Dual Column Confirmation (BP1/BPX35, BPX5/BPX35, BP5/BPX35)
- Environmental Sensitive Compounds
  - Herbicides
  - Pesticides
  - Aroclors
- Pharmaceuticals
- PNA's
- Amines (general)
- Alcohols (general)
- Solvents
- Foods & Flavours

## ORDERING INFORMATION PHASE TYPE BPX35

| ID (mm) | Length (mm) | Film Thickness (µm) | Temperature Limits(°C) | Part No |
|---------|-------------|---------------------|------------------------|---------|
| 0.10    | 10          | 0.1                 | 0 to 360/370           | 054699  |
| 0.22    | 15          | 0.25                | 0 to 360/370           | 054713  |
|         | 30          | 0.25                | 0 to 360/370           | 054714  |
| 0.25    | 15          | 0.25                | 0 to 360/370           | 054700  |
|         | 15          | 1                   | 0 to 360/370           | 054703  |
|         | 30          | 0.25                | 0 to 360/370           | 054701  |
|         | 30          | 0.5                 | 0 to 360/370           | 0547025 |
|         | 30          | 1                   | 0 to 360/370           | 054704  |
|         | 60          | 0.25                | 0 to 360/370           | 054702  |
|         | 60          | 1                   | 0 to 360/370           | 054705  |
| 0.32    | 15          | 0.25                | 0 to 360/370           | 054723  |
|         | 15          | 0.5                 | 0 to 360/370           | 054718  |
|         | 15          | 1                   | 0 to 360/370           | 054716  |
|         | 30          | 0.25                | 0 to 360/370           | 054724  |
|         | 30          | 0.5                 | 0 to 360/370           | 0547158 |
|         | 30          | 1                   | 0 to 360/370           | 054717  |
|         | 60          | 0.25                | 0 to 360/370           | 054725  |
| 0.53    | 15          | 0.5                 | 0 to 360/370           | 054734  |
|         | 15          | 1                   | 0 to 360/370           | 054736  |
|         | 30          | 0.5                 | 0 to 360/370           | 054735  |
|         | 30          | 1                   | 0 to 360/370           | 054737  |

### TRADEMARKS:

DB - J & W Scientific  
SPB - Supelco Inc.

Rtx - Testek Corp. AT - Altech  
OV - Ohio Valley Speciality Chemical Co



Publication No. PD-0053-C Rev:02 02/01

### SGE International Pty. Ltd.

Tel: +61 (0) 3 9837 4200  
Fax: +61 (0) 3 9874 5672  
email: support@sge.com

### SGE Australia Pty. Ltd.

Toll Free: 1800 800 167  
Fax: (03) 9874 5672  
email: sales@sge.com

### SGE Incorporated (USA)

Toll Free: 800 945 6154  
Fax: +1 512 836 9159  
email: usa@sge.com

### SGE Europe Ltd. (UK)

Tel: +44 (0) 1908 568 844  
Fax: +44 (0) 1908 566 790  
email: uk@sge.com

### SGE (France) Sarl

Tel: +33 (0) 1 6929 8090  
Fax: +33 (0) 1 6929 0925  
email: france@sge.com

### SGE (Italia) Srl.

Tel: +39 06 4429 0206  
Fax: +39 06 4429 0724  
email: sge.italia@tin.it

### SGE Deutschland GmbH

Tel: +49 (0) 6151 860486  
Fax: +49 (0) 6151 860489  
email: germany@sge.com

### SGE China Service Centre

Tel: +86 (10) 6588 8666  
Fax: +86 (10) 6588 6577  
email: sge@bj.col.com.cn

### SGE Japan Inc.

Tel: +81 (45) 222 2885  
Fax: +81 (45) 222 2887  
email: japan@sge.com

### SGE India

Tel: +91 (022) 471 5896  
Fax: +91 (022) 471 6592  
email: sgeindia@bom4.vsnl.net.in